

Terraced Townhouse in Benamara

Reference: R5162437



Bedrooms: 4

Bathrooms: 4

M² Build size: 307

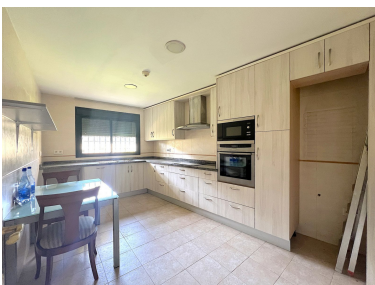
Price: 659,000 €

Status: Sale

Property Type: Terraced
Townhouse

Parking places: by request

M² Plot Size:





Overview:Spacious townhouse located in the Atalaya area next to Guadalmina, just a few minutes' drive from San Pedro de Alcántara and Puerto Banús, surrounded by several of the area's best golf courses, such as Atalaya, Guadalmina, El Paraiso, Los Arqueros, and more. The house is generously sized. It consists of a large living room with a separate kitchen with a utility room, four spacious bedrooms with three bathrooms, terrace areas, and a solarium. It also has a private parking space in the basement. Located within a small private development with communal gardens and a swimming pool, this is an ideal property for clients looking for a large home with many possibilities.

Features: