

Penthouse in La Mairena

Reference: R5160967



Bedrooms: 3

Bathrooms: 2

M² Build size: 113

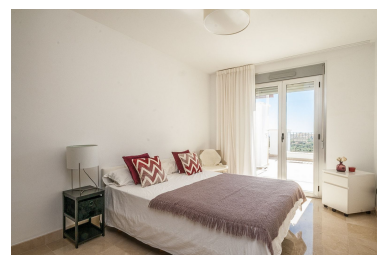
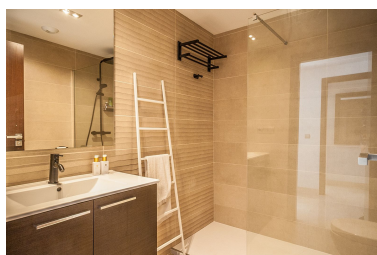
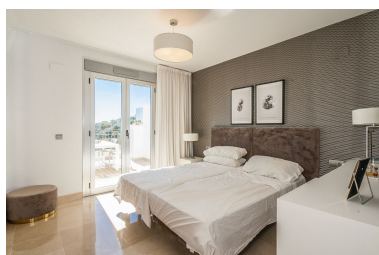
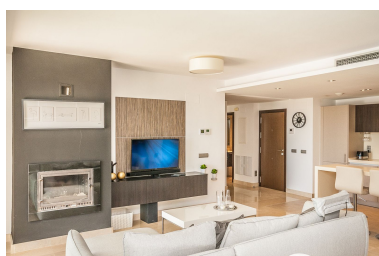
Price: 560,000 €

Status: Sale

Property Type: Penthouse

Parking places: by request

M² Plot Size:



Overview:Nestled in the UNESCO-protected area of La Mairena, this beautifully maintained penthouse offers an exceptional blend of comfort, style, and tranquility. The property features three bedrooms and two bathrooms, a fully fitted kitchen with utility area, and a spacious layout ideal for family living or as a holiday retreat. A highlight of the home is the large terrace with breathtaking panoramic views and an added conservatory with glass curtains, to create a versatile all-season living space. Additional features include an elevator bringing you directly to your front door, private solar panels with the added benefit of low electricity consumption, a private parking space and inclusion in a gated community with landscaped communal gardens and several outdoor swimming pools. Residents enjoy exclusive access to El Soto Golf Club, which offers a gym, sauna, and restaurant. The property is also close to schools and the Hofsass Tennis Club, making it an excellent choice for both families and sports enthusiasts. Despite its peaceful and private setting, the apartment is only 10 minutes from the Elviria exit, providing convenient access to the coast and all local amenities.

Features:

Pool, Sea views, Mountain views, Lift, None, Private garden, Parking