

## Land in La Duquesa

Reference: R5119717



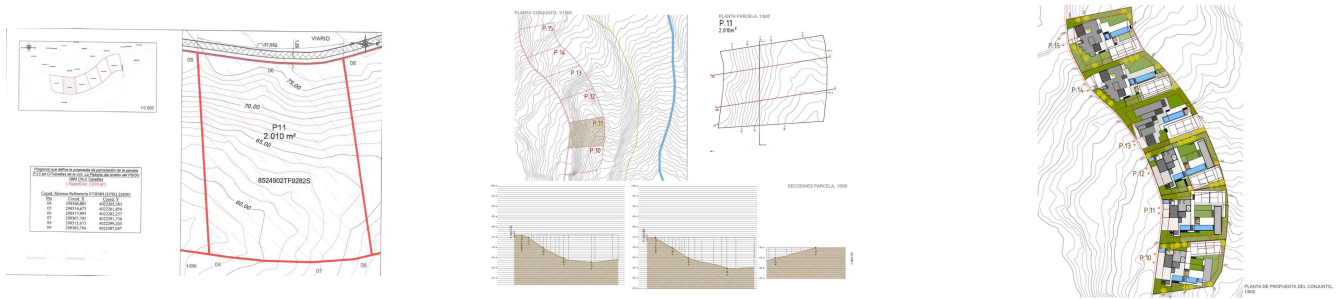
Bedrooms: by request  
Status: Sale

Bathrooms: by request  
Property Type: Land

M<sup>2</sup> Build size: 603  
Parking places: by request

Price: 500,000 €  
M<sup>2</sup> Plot Size: 1,827






---

Overview: PLOT OF LAND for DETACHED VILLA, with a surface of 1.827m<sup>2</sup>, and a buiding volume of 33% (603m<sup>2</sup>), and even more thanks to the slope of the land. Located in the beautiful Urbanization of La Paloma de Manilva, between the attractive Puerto de La Duquesa and the prestigious Urbanizacion Sotogrande, both places just in a few minutes drive. Southeast facing, very quiet area with excellent panoramic views to the sea, mountains, beach and the Africa coast. Only 500 meters from magnificent beaches and 5 minutes drive from the old fishing village of Sabinillas, where you will find all kinds of services, shops and leisure areas. The urbanization has security guard and excellent infraestructure, with lights, good reads, and all the supplies, water, electricity, drantage, fiber optic, etc, and the necessarty documents to get the building license. Good opportunity that most be seen!!

---

#### Features:

None, Pool, Sea views, Mountain views, Private garden, 24H Security, Resale