

+34 604 489 646

info@luxury-realty.com

---

Terraced Townhouse in Benalmadena Costa

Reference: R5072329



Bedrooms: 3

Status: Sale

Bathrooms: 3

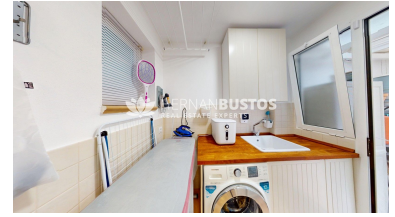
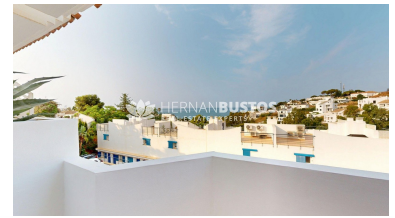
Property Type: Terraced  
Townhouse

M<sup>2</sup> Build size: 177

Parking places: by request

Price: 559,990 €

M<sup>2</sup> Plot Size:




---

**Overview:** Townhouse with sea views in Torremuelle, steps away from the British College. Discover this spacious townhouse in the exclusive urbanization Arcadia 16, located in Torremuelle, one of the most sought after residential areas of Benalmádena for its proximity to the sea, the British College and its quiet and well connected environment. The property offers more than 177 m<sup>2</sup> built over 4 floors, including a large private garage of 58 m<sup>2</sup>, ideal for two vehicles and storage area. In total, it has 3 double bedrooms, 2 full bathrooms and 1 toilet, as well as two terraces with sea and mountain views, a private backyard and an attic. Distribution and spaces: \*Multipurpose basement with pantry, storage room, installation for wine cellar and water filtering and decalcification systems. \*Main floor with very bright living-dining room, pellet fireplace, fitted kitchen with XEY furniture and granite worktop, guest toilet and direct access to a terrace with bioclimatic pergola and planters with automatic irrigation. \*First floor with three double bedrooms, fitted wardrobes and two bathrooms, one of them en suite. \*Open-plan attic, ideal as a work area or additional storage room. Extras highlighted: -Domotics and security system (optional): smart locks, smoke and motion sensors, alarms, automatic lights, control by mobile app/Alexa/Google. Pre-installation of air conditioning throughout the house. -Climalit windows and doors with mosquito nets. -Pellet fireplace, projection system and electric curtains in the living room and master bedroom (optional). -Kitchen with thermal tap, osmosis system and top of the range electrical appliances (optional). -Garage with automatic door, intelligent lighting, drainage and direct entrance to the house. -Main terrace with sea views, aluminium pergola with wind/rain sensors. -Rear patio with covered work area and reinforced privacy. A versatile property, ideal both as a permanent home and as an investment, in a strategic area of the Costa del Sol: close to the sea, transport, international schools and all services.

---

**Features:**

None, Pool, Sea views, Mountain views, Parking