

Land in Benahavís

Reference: R4405132

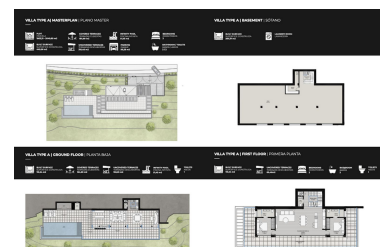
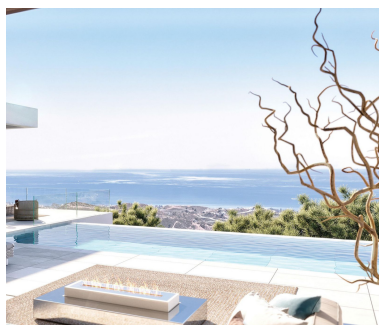


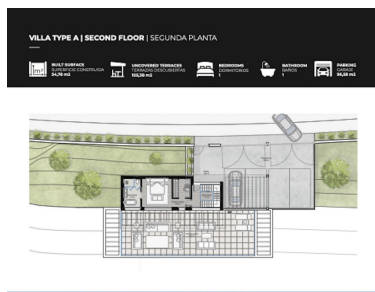
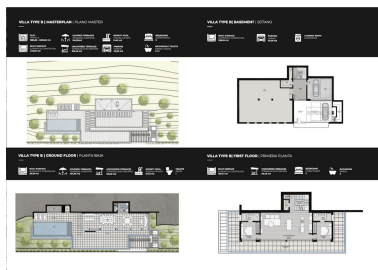
Bedrooms: by request
Status: Sale

Bathrooms: by request
Property Type: Land

M² Build size: 449
Parking places: by request

Price: 810,000 €
M² Plot Size: 1,751





Overview: A wonderful opportunity....here is a plot of land with great potential. The original design offers a total build size of 440m², of which covered terraces are 164m², uncovered terraces 310m², a pool of 51m², a garage of 45m² and interior built surface of 258m². An in-depth assessment of the project and build have been carried out and there is a lot of information to be shared with an interested party. Please note: the plans included here are simply an idea. There is no project on this plot. El Real de la Quinta goes from strength to strength and a plot like this one is a diamond with a huge potential. Up to 4 levels can be built on this plot, and a building license can be secured from the Benahavís municipality in as little as 3 months, streamlining the development process. For any interested person or developer, get in touch to find out more about the possibility of building alongside 2 other owners on this location, who have already made significant in-roads into the preparations. Super west-facing plot within the area of El Real de la Quinta. This plot is flat and is ready for an architect to come and design a dream home. Overlooking what will be the golf course of this luxurious new area in Benahavís, the villa that is built here will have stunning views and will be able to access incredible facilities. The resort includes premium amenities, such as a central lake, clubhouse with outdoor swimming pool, gym, spa, tennis courts, and a golf course with its own academy. Additionally, the nearby 5-star hotel, operated by the esteemed Banyan Tree Group, enhances the area's prestige. Real de La Quinta Residential Country Club Resort® is an enchanting 200 hectare residential resort, seamlessly integrated into the idyllic foothills of the Sierra de las Nieves overlooking the majestic La Concha mountain, the picturesque Costa del Sol and bordering the UNESCO biosphere reserve. Fulfil your lifestyle dreams with the Real de La Quinta real estate project where nature coexists with the modern world. GREAT OPPORTUNITY TO OBTAIN A BUILDING PLOT IN THE MOST UP AND COMING LOCATION BUILDING PLOT IN REAL DE LA QUINTA WITH GORGEOUS VIEWS AND WEST ORIENTATION.

Features:

Sea views, Mountain views